

# SIAS Division

Division of Strategic Issues and Applications for Society



# SIAS Division

Division of Strategic Issues and Applications for Society

[www.socib.eu](http://www.socib.eu)





# SIAS Division

Division of Strategic Issues and Applications for Society

[www.socib.eu](http://www.socib.eu)

# 1. GENERAL OBJECTIVES

---



Societal needs



Science-based tools



Technological development

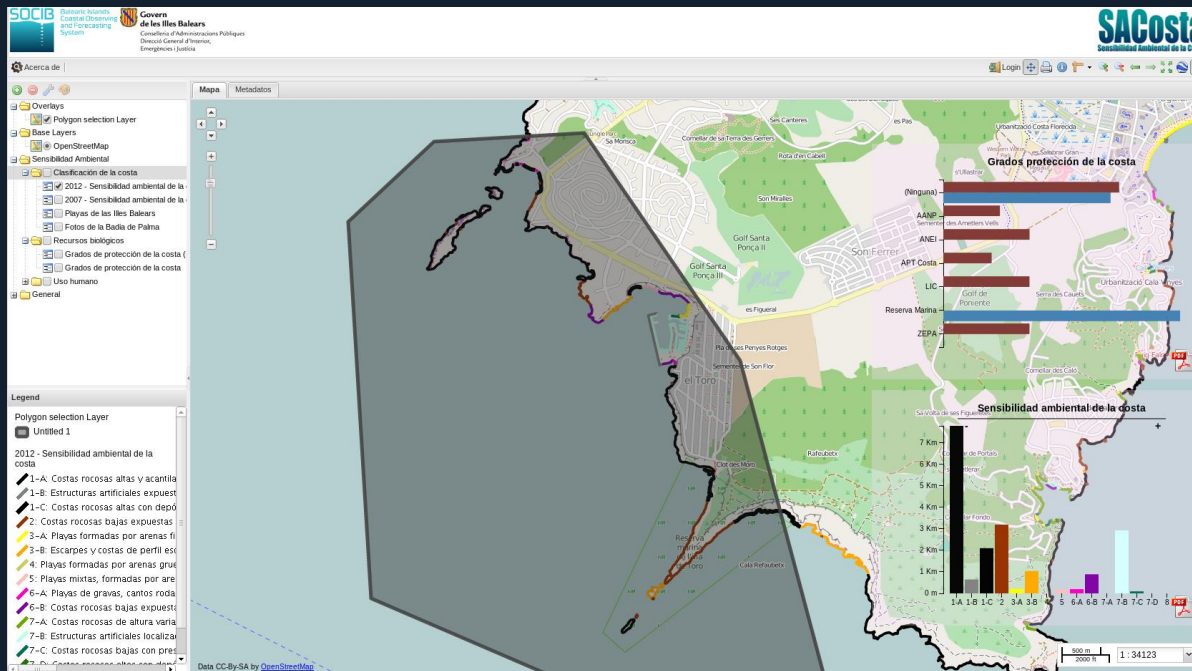


Integrated Coastal  
Management



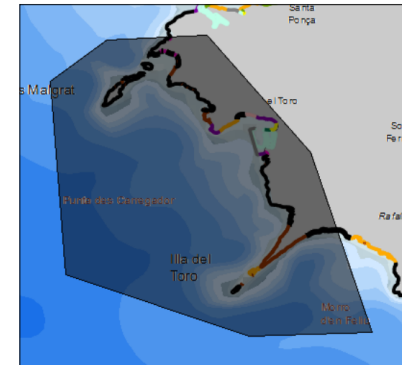
Marine Spatial Planning

## 2. MAJOR ACOMPLISHMENTS SO FAR 2013-2014



### Sa Costa

#### Sensibilidad ambiental por tipo de costa



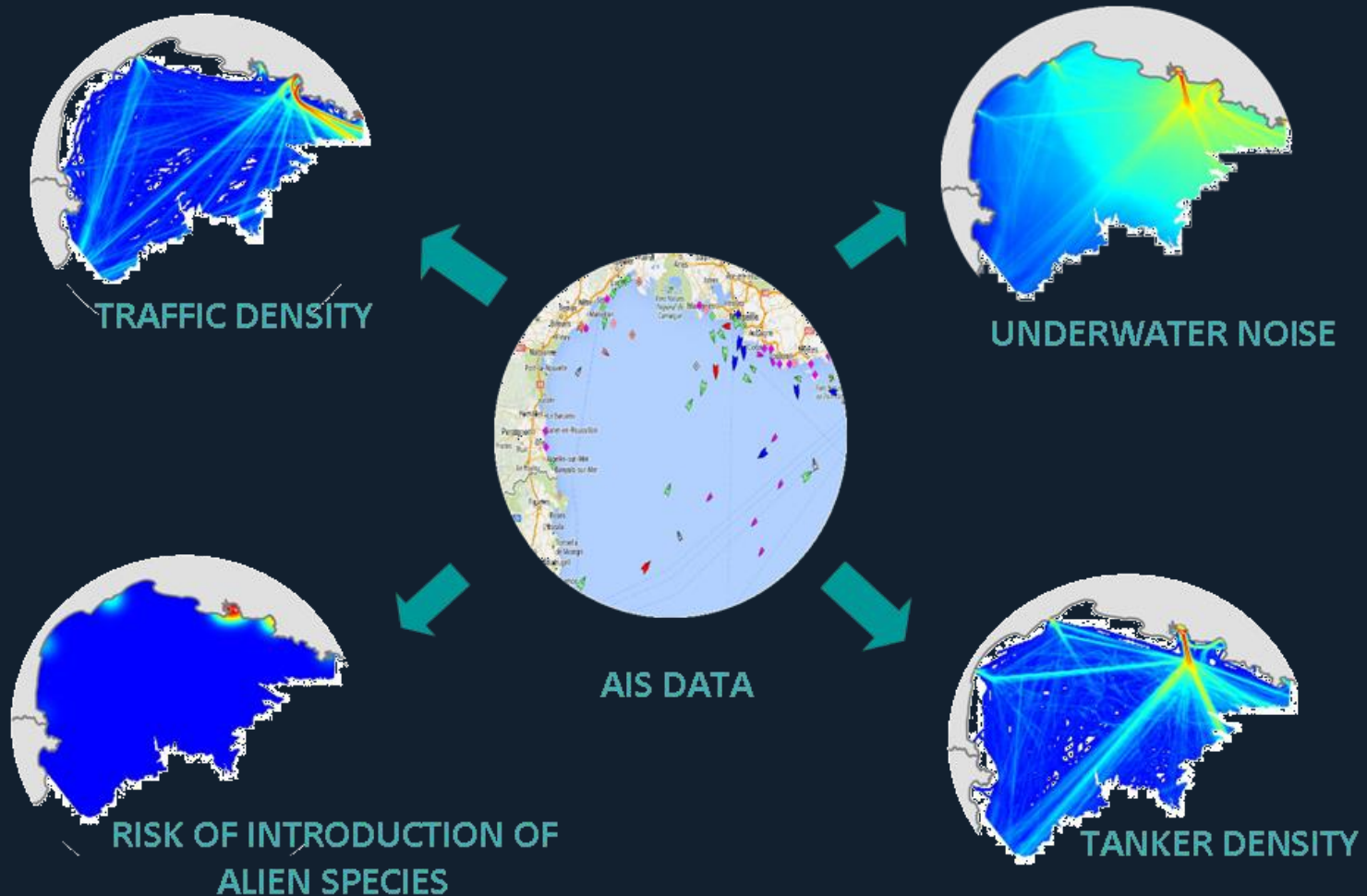
#### Análisis del tipo de la costa

Código	Descripción tipo de costa	Longitud
1-A	Costas rocosas altas y acantilados expuestos a la incidencia directa del oleaje	7.79 km
1-B	Estructuras artificiales expuestas a la incidencia directa del oleaje	0.65 km
1-C	Costas rocosas altas con depósitos de derrubios y acumulaciones de bloques en la base expuestas a la incidencia directa del oleaje	2.10 km
2	Costas rocosas bajas expuestas a la incidencia directa del oleaje	3.19 km

DEVELOP TOOLS FOR MARINE DISASTERS

<http://gis.socib.es/sacosta>

## 2. MAJOR ACOMPLISHMENTS SO FAR 2013-2014



**MONITORING SHIP-BASE ACTIVITIES AND MODELLING THEIR PRESSURES**



## 2. MAJOR ACOMPLISHMENTS SO FAR 2013-2014

### HIGH-RESOLUTION CUMULATIVE PRESSURE ANALYSIS

35 PRESSURE MAPS  
16 ECOSYSTEM TYPES  
35 x 16 VULNERABILITY MATRIX  
750,000 GRID CELLS

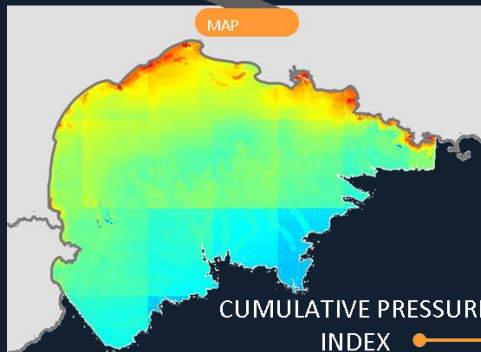


MODELLING

TRANSFORMATION

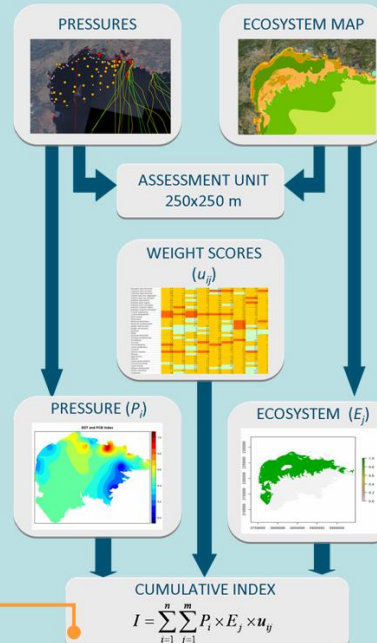
NORMALIZATION

MAP



CUMULATIVE PRESSURE  
INDEX

### HOW WE CALCULATE THE INDEX?



### Cumulative anthropogenic pressure mapping a case study of the *Alcúdia Bay* - Majorca



Max Siegfried

Raissa Borgmann

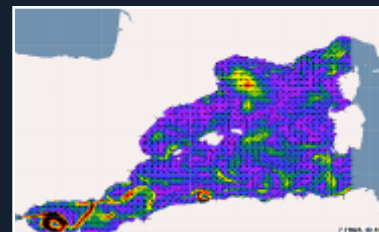
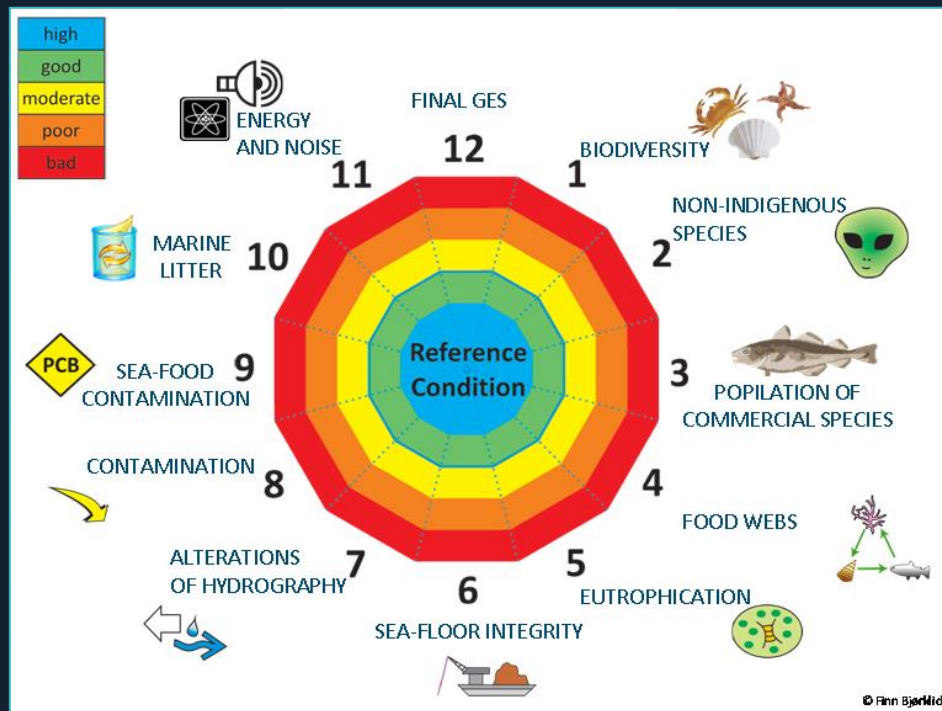
Van Hall Larenstein - University of Applied Sciences

Leeuwarden, the Netherlands

October 2013



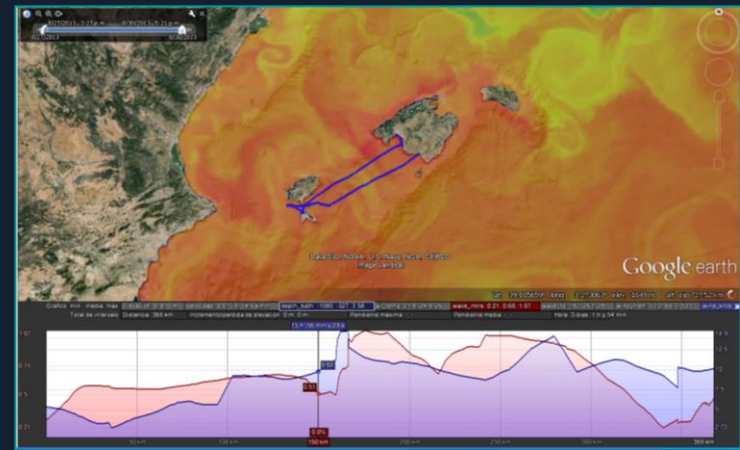
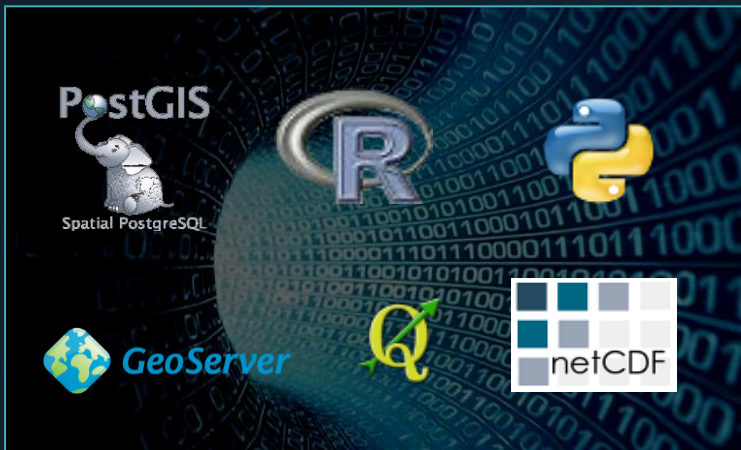
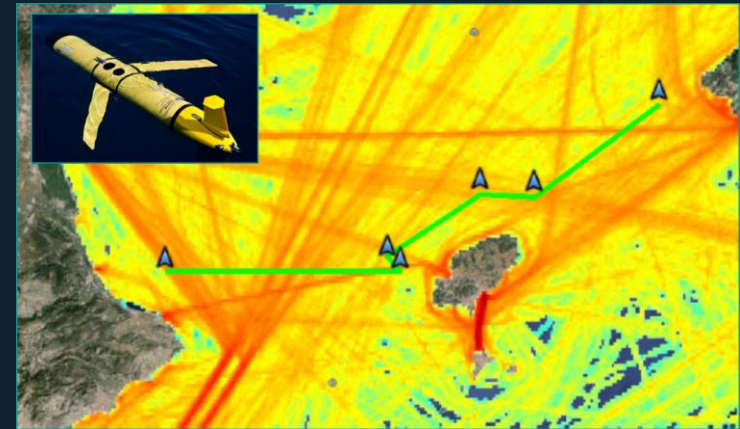
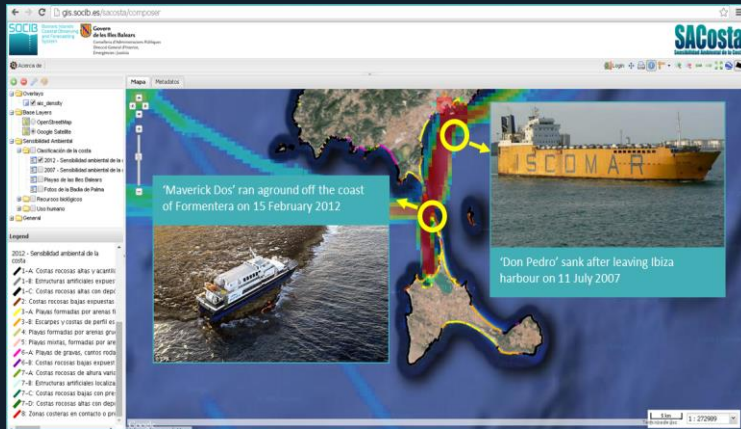
# 3. OBJECTIVES FOR 2015



MONITORING TO SUPPORT MARINE STRATEGY FRAMEWORK DIRECTIVE

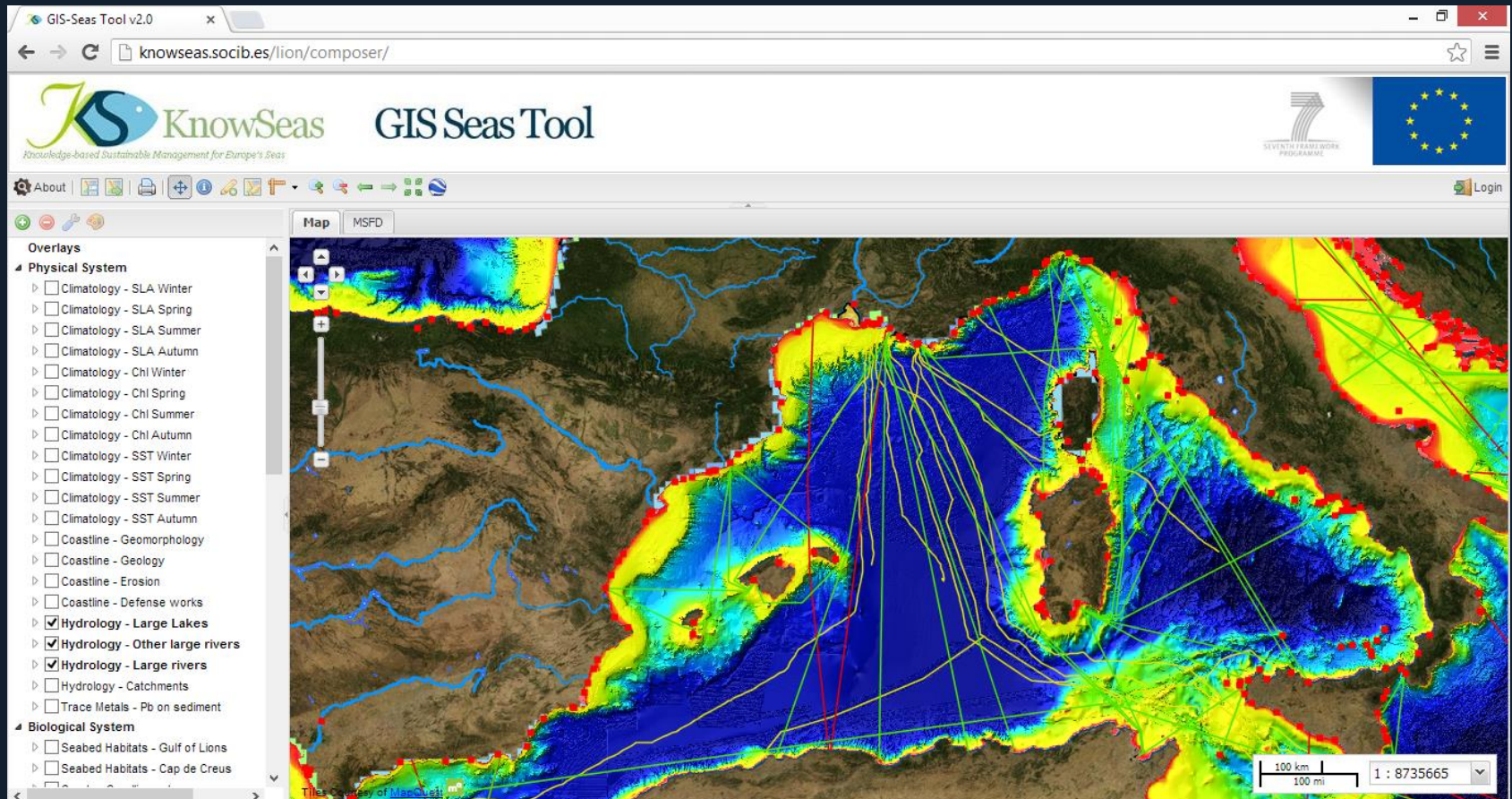


# 3. OBJECTIVES FOR 2015



TOWARDS AN OPERATIONAL AIS FACILITY

# 3. OBJECTIVES FOR 2015



MARINE/COASTAL ATLAS

New EU Marine Spatial Planning Directive!



### 3. OBJECTIVES FOR 2015

---



INTEGRATION WITH ONGOING ACTIVITIES



## 4. MAJOR NEEDS

---



