

MARITIME TRAFFIC

ONE DRIVER, MULTIPLE PRESSURES

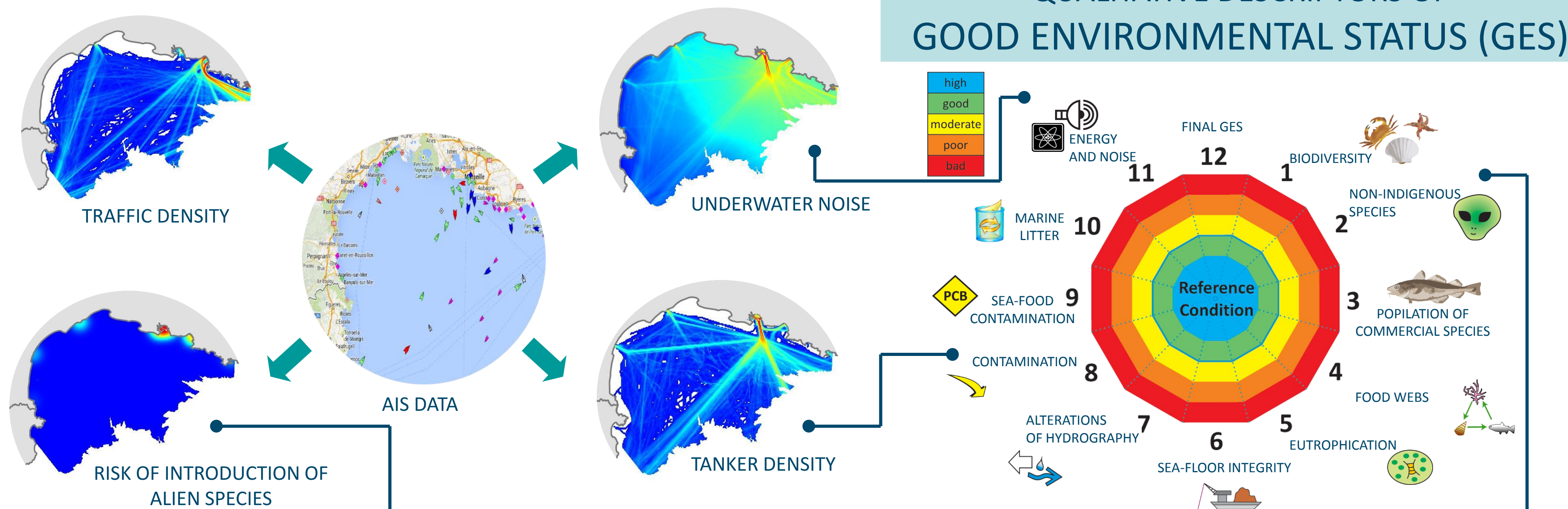
MOTORWAYS
OF THE SEA

- IMPORTANT ROLE IN THE WORLD TRADE AND ITS ECONOMIC DEVELOPMENT
- ENCLOSED SEA SUCH AS THE MEDITERRANEAN PARTICULARLY VULNERABLE
- PRESSURES RELATED TO MSFD DESCRIPTORS: BIODIVERSITY, ALIEN SPECIES, POLLUTION, LITTER, NOISE

AIS: AUTOMATED IDENTIFICATION SYSTEMS

- REGISTER THE POSITION OF COMMERCIAL SHIPS
- WE DEVELOP A SYSTEM TO STORE, MANAGE, ANALYSE AND VISUALIZE AIS DATA USING POSTGIS AND R.
- WE GENERATE DIFFERENT GRIDDED PRODUCTS TO REPRESENT RELATED PRESSURES USING GIS

PRESSURE MAPPING

IMPLICATIONS
FOR THE MSFD

- WE PROVIDE BASELINE INFORMATION TO SUPPORT **INITIAL ASSESSMENT**
- **MONITORING PROGRAMS** COULD USE THIS INFORMATION FOR SAMPLING DESIGN
- **PROGRAMS OF MEASURES AND MSP** NEED TO CONSIDER HUMAN ACTIVITIES

CUMULATIVE PRESSURES

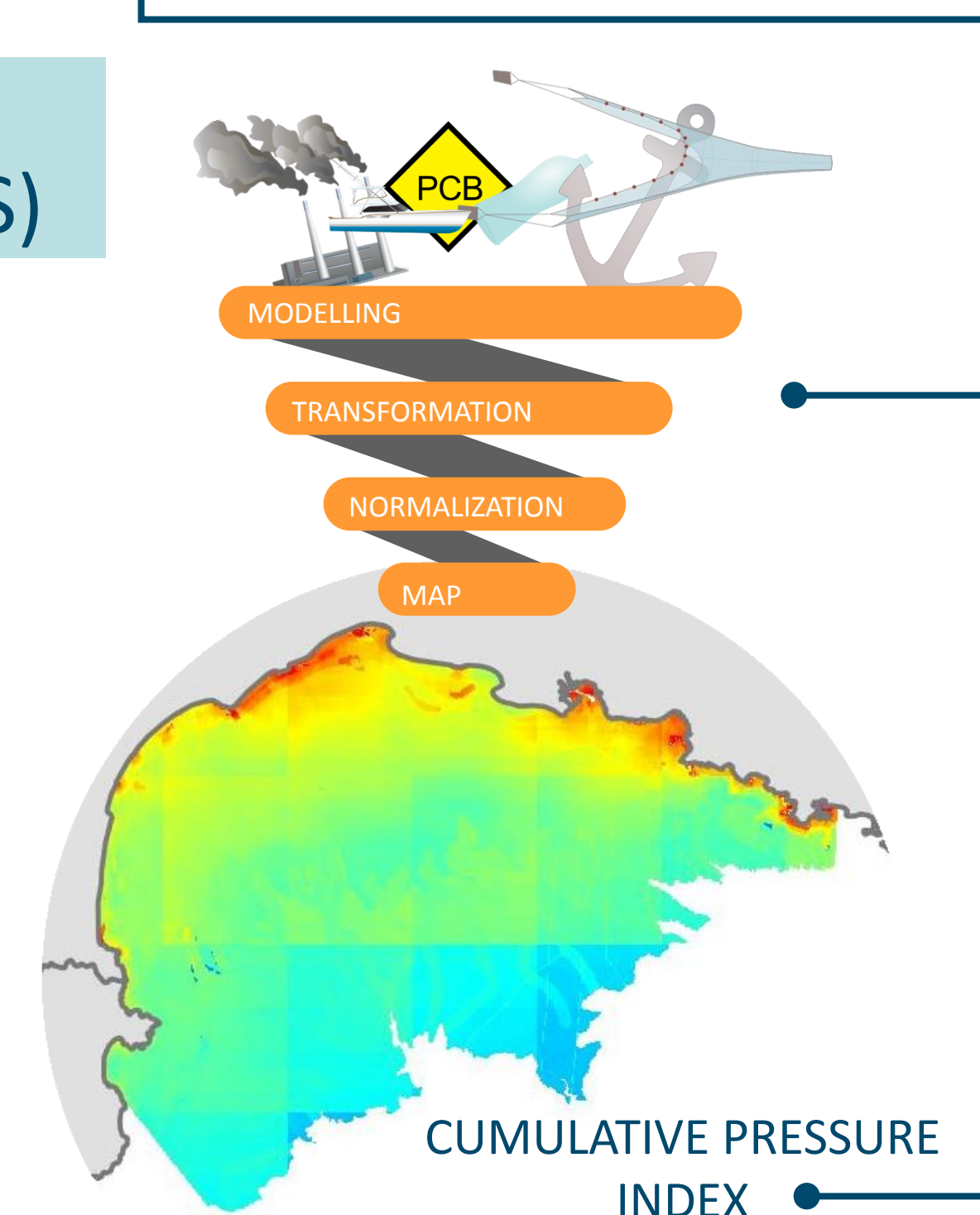
MULTIPLE DRIVERS, ONE INDEX

HOLISTIC
APPROACH

- GOOD ENVIRONMENTAL STATUS OF MARINE ENVIRONMENTS CONDITIONED BY WIDE SET OF PRESSURES FROM HUMAN ACTIVITIES
- A HOLISTIC APPROACH IS ESSENTIAL FOR THE MANAGEMENT OF MARINE AREAS
- IDENTIFICATION, COMPARISON AND QUANTIFICATION OF CUMULATIVE PRESSURES ARE NEEDED

HIGH-RESOLUTION
CUMULATIVE PRESSURE ANALYSIS

- 35 PRESSURE MAPS
- 16 ECOSYSTEM TYPES
- 35 x 16 VULNERABILITY MATRIX
- 750,000 GRID CELLS



SUPPORTED BY



HOW

WE CALCULATE THE INDEX?

