



SOCIB Modelling and Forecasting Facility

Baptiste Mourre

Mélanie Juza

Amaya Álvarez Ellacuria

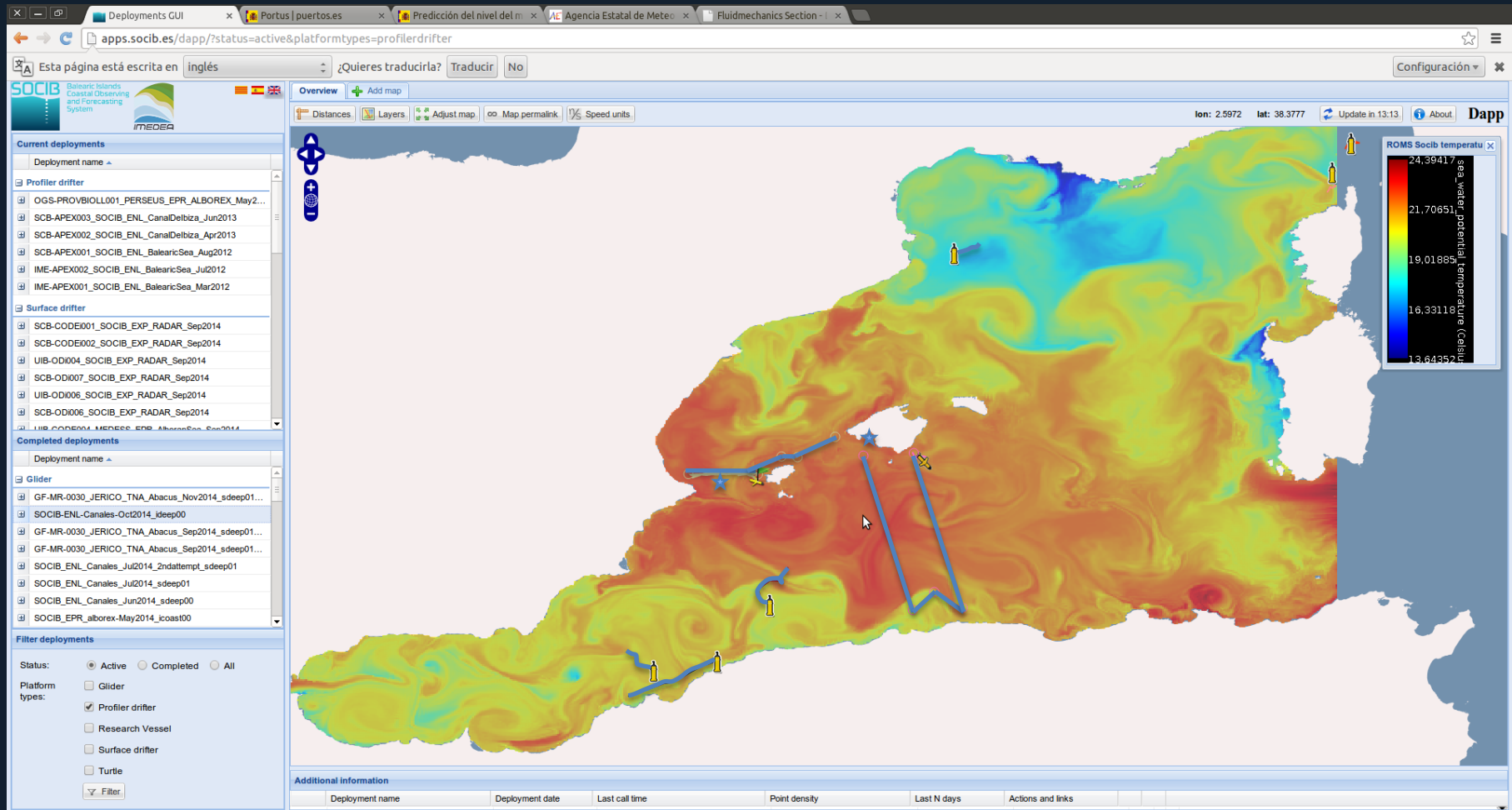
TEAM WORK TO guarantee Scientific Excellence & Technology Development

with... Impact on Society

www.socib.es

WHY ARE MODELS SO ESSENTIAL TO SOCIB ?

Ocean observations are inevitably limited in space and time !



WHY ARE MODELS SO ESSENTIAL TO SOCIB ?

Models have the capacity to represent the full ocean state (all physical oceanic variables) from surface to bottom everywhere in the domain, as well as its evolution in time.

➡ Essential to **understand** what we are able to detect in the observations.

➡ Essential to **predict** future states.

SOCIB Balearic Islands
Coastal Observing
and Forecasting
System

➡ Essential to **integrate** all available information from multi-platform observations into a unified picture.

➔ *data assimilation*

➡ Essential to **objectively design** the observation sampling requirements

➔ *Observing System Simulation Experiments*

MODELLING AND FORECASTING FACILITY OBJECTIVES

Develop, implement and operate several ocean prediction systems aiming at responding to society needs in the Balearic Islands and Western Mediterranean Sea.

Conduct scientific research to continuously improve the model forecasting skills and develop new systems.

1 **WMOP:** Western Mediterranean hydrodynamic model

→ 3-day predictions of ocean currents, sea level, temperature and salinity

2 **SAPO:** Balearic Islands wave model

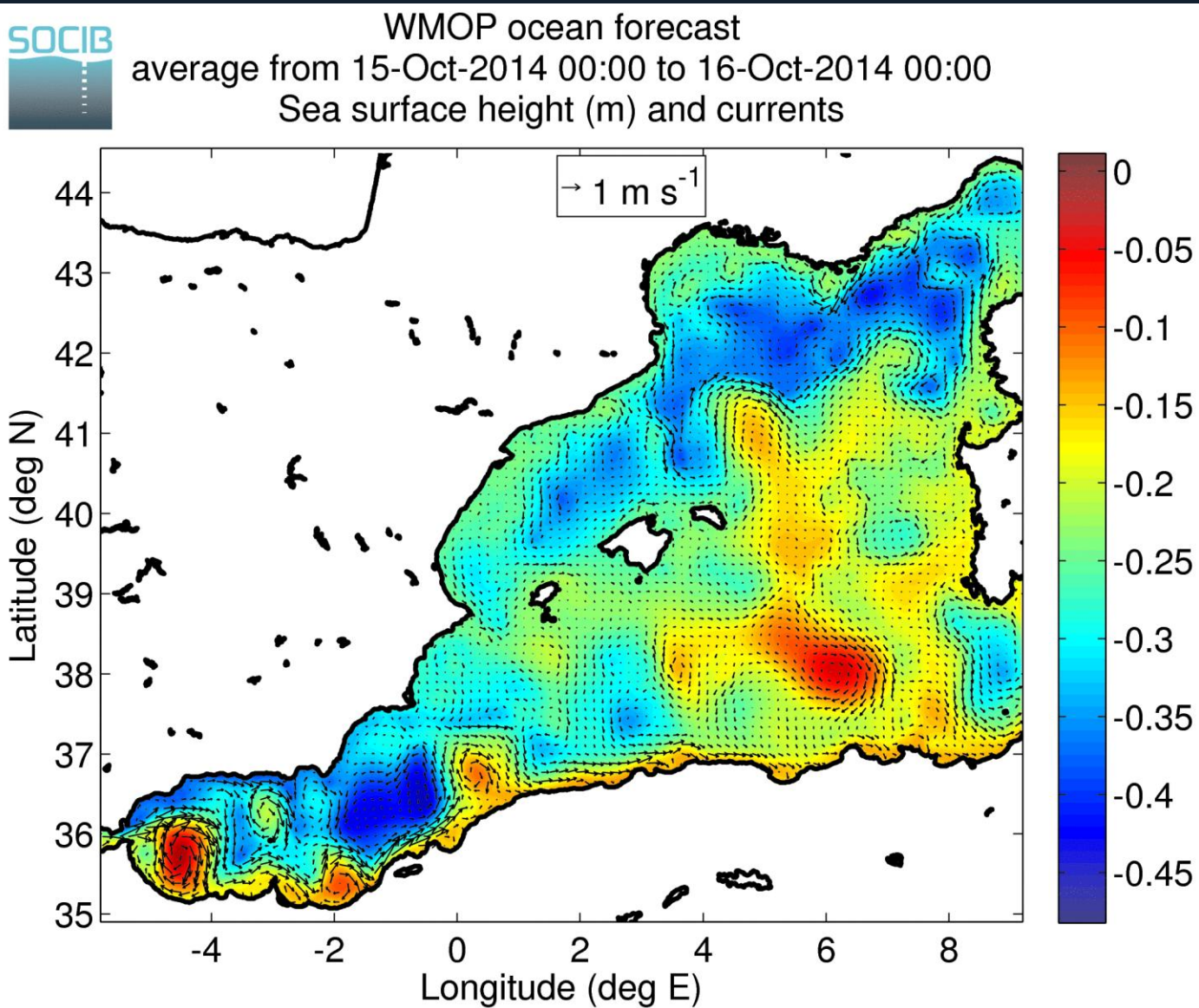
→ 3-day predictions of wave height, period and direction

3 **BRIFS:** Ciutadella harbour rissaga prediction model

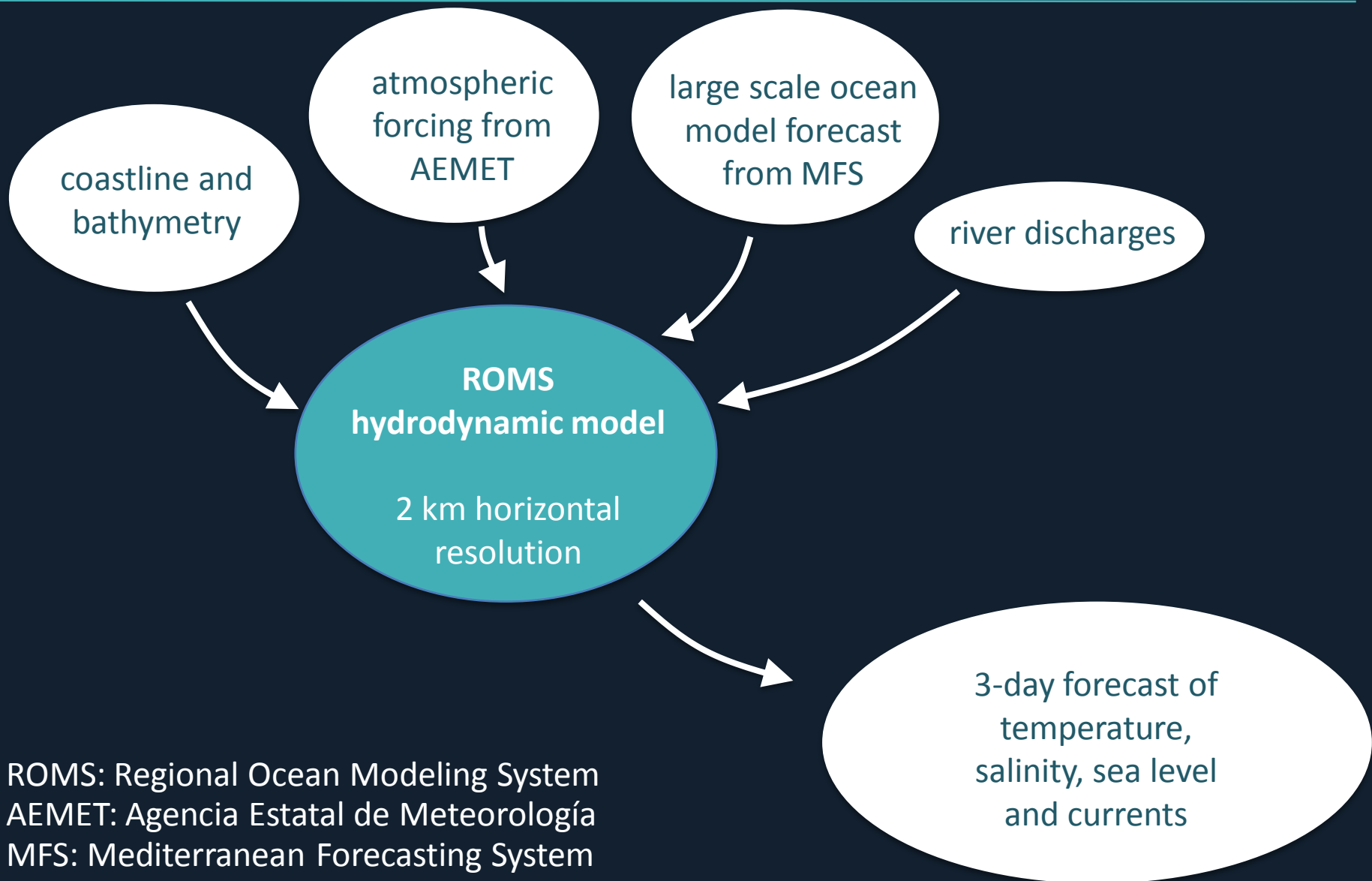
→ 2-day predictions of atmospheric pressure and sea level oscillations

1

WMOP: Western Mediterranean Operational Model

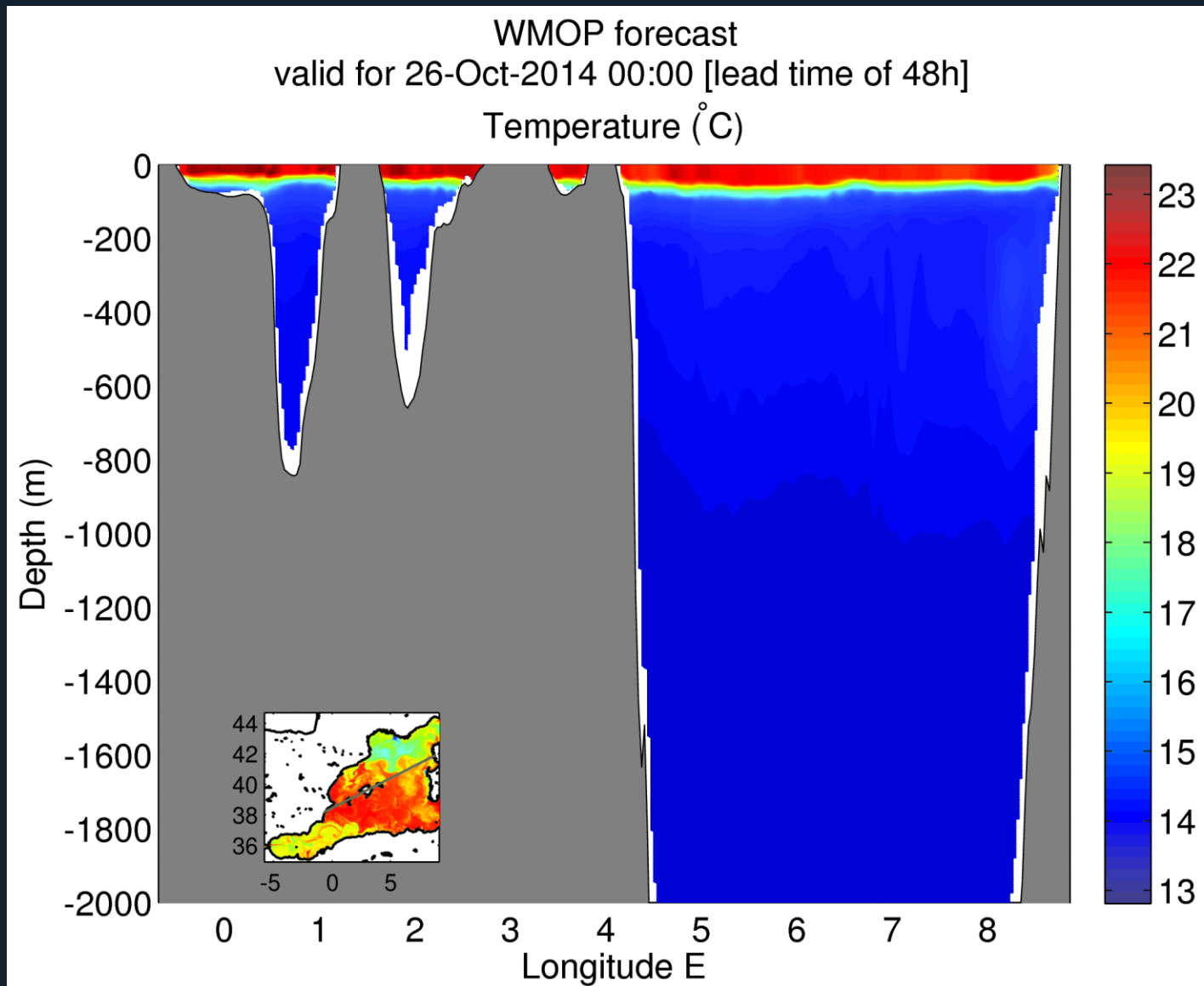


1 WMOP: Western Mediterranean OPerational Model



1

WMOP: Western Mediterranean OPERational Model



MODELLING AND FORECASTING FACILITY

Overview

Ocean forecasting system

System description

Ocean forecast

Operational validation

Ocean indicators

Data access

Rissaga forecast

Wave forecast

Oil spill forecast

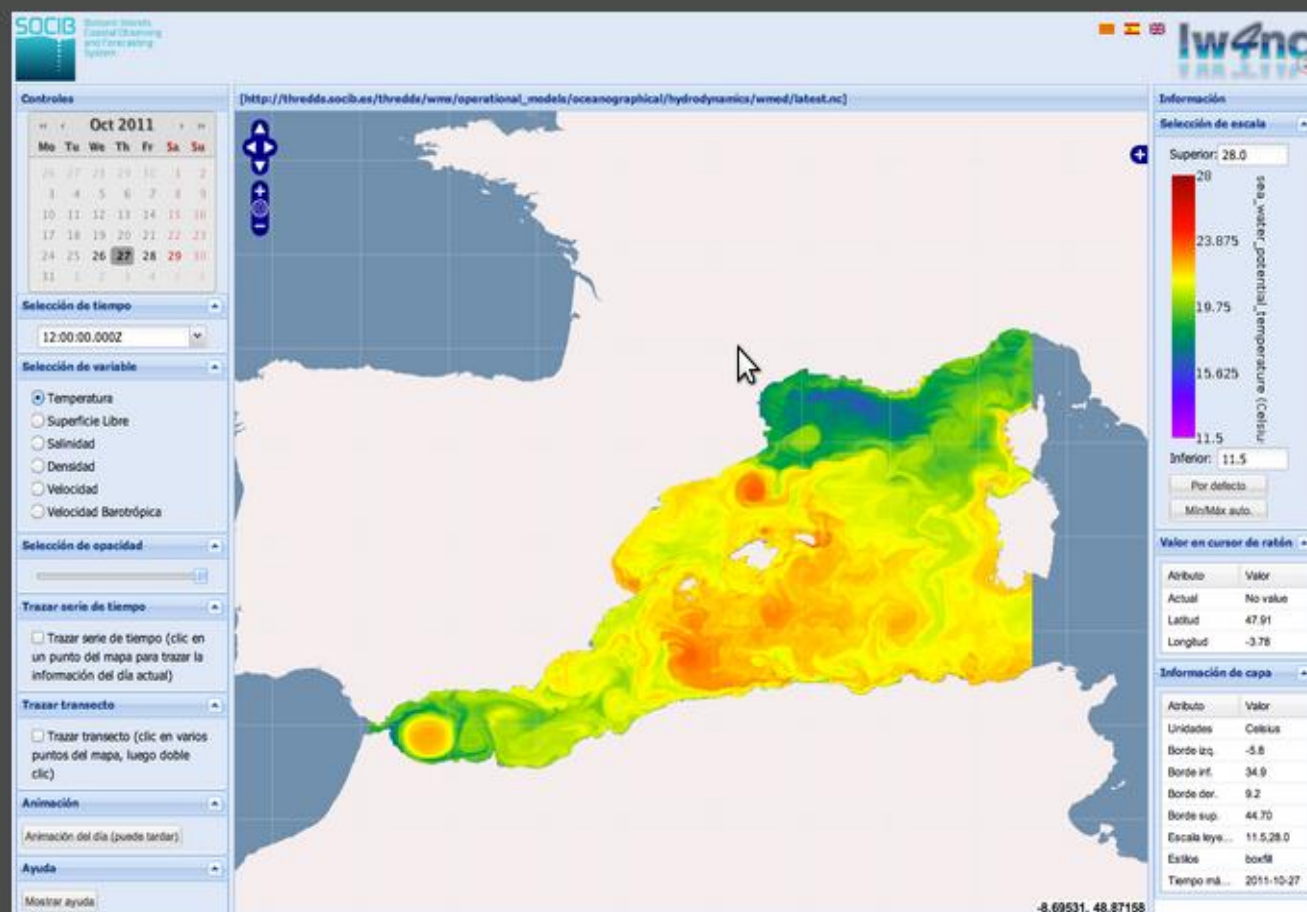
Publications

Links

Acknowledgements

Interactive visualization

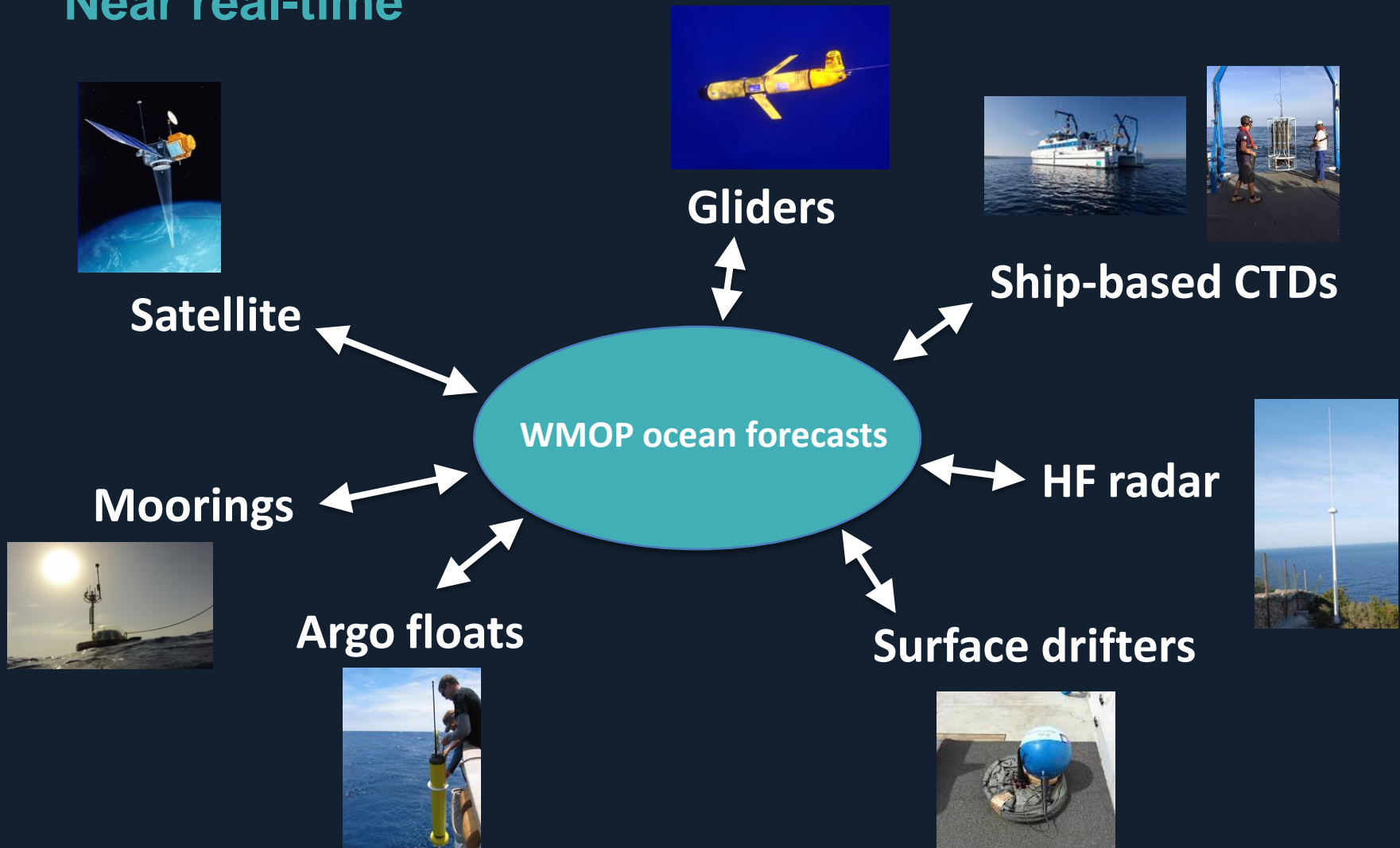
The application **lw4nc** provides an interactive system to visualize the model outputs selecting variables (temperature, salinity, currents, free surface, barotropic velocity) and visualization types (snapshots, animations, maps, time series, regional zoom, sections, fixed positions, etc...).



1 WMOP systematic evaluation

Delayed mode

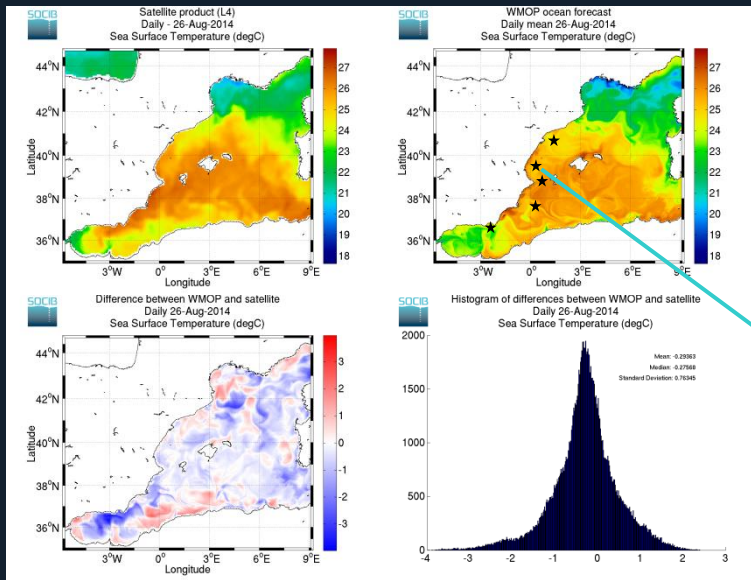
Near real-time



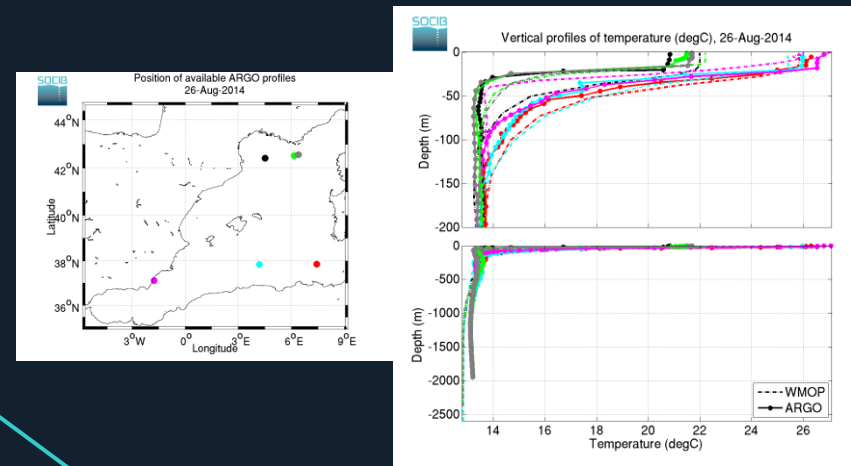
1

WMOP systematic evaluation (near real-time)

Sea Surface Temperature Satellite products (1/16°) [www.myocean.eu]

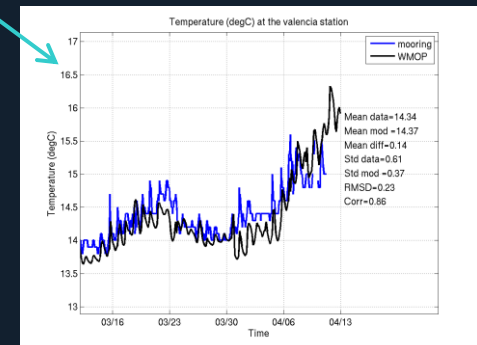
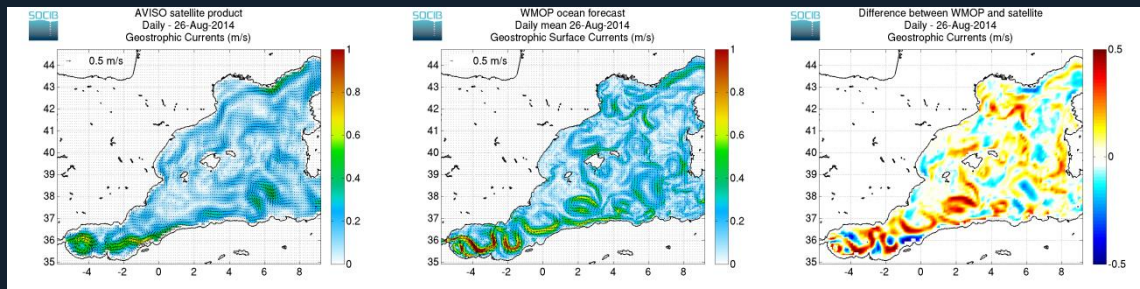


Temperature/Salinity profiles Argo floats [www.ifremer.fr]

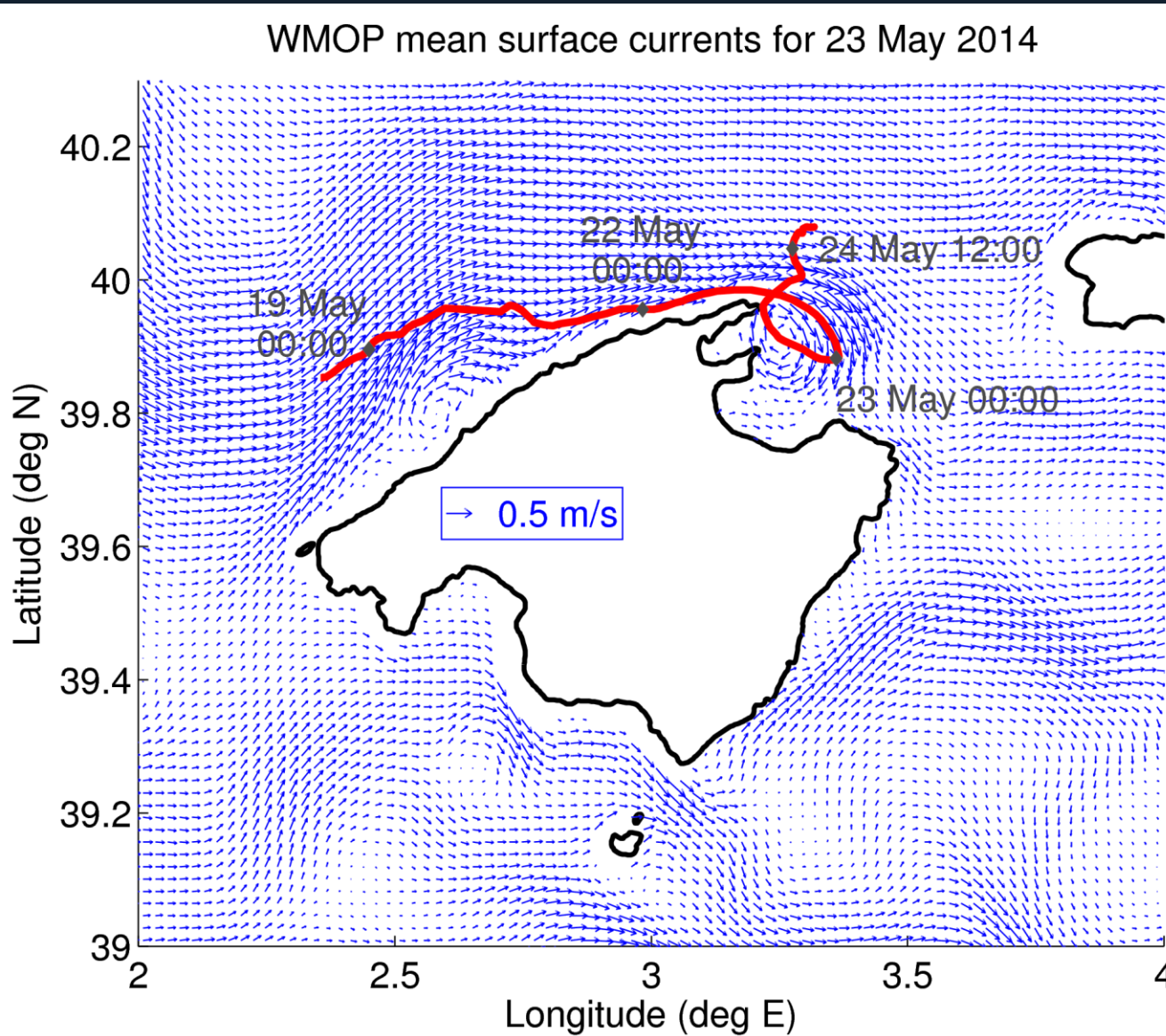


Temperature, Salinity, Currents Fixed moorings [www.puertos.es, www.socib.es]

Geostrophic Current Altimetry products (1/8°) [www.aviso.oceanobs.com]



1 WMOP systematic validation (delayed time)



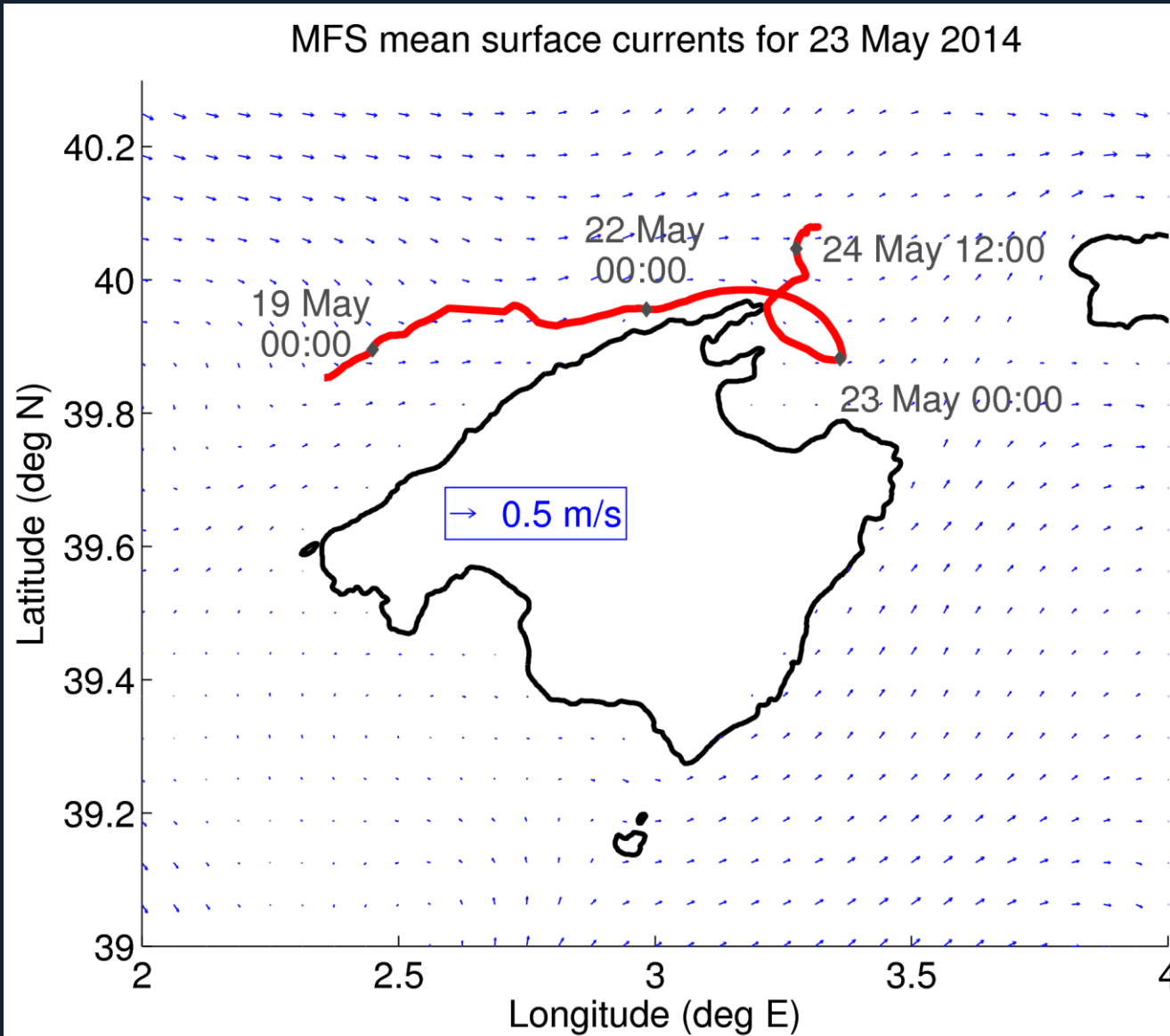
Mean velocity along
the drifter trajectory:

drifter → 0.30 m/s

MFS → 0.10 m/s

WMOP → 0.36 m/s

1 WMOP systematic validation



Mean velocity along
the drifter trajectory:

drifter → 0.30 m/s

MFS → 0.10 m/s

WMOP → 0.36 m/s

1 WMOP improvements: challenges and future work

- Robust model reformulation to allow for future improvements.
- Inclusion of gliders, HF radar and surface drifter observations in the near real-time model validation.
- Data assimilation in the model.

Some underlying scientific questions to be investigated through historical simulations (“hindcast”):

Interactions between ocean eddies and the mean circulation ?

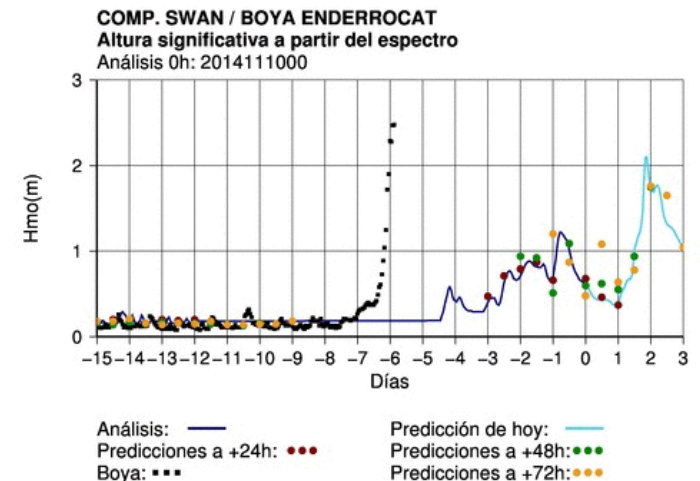
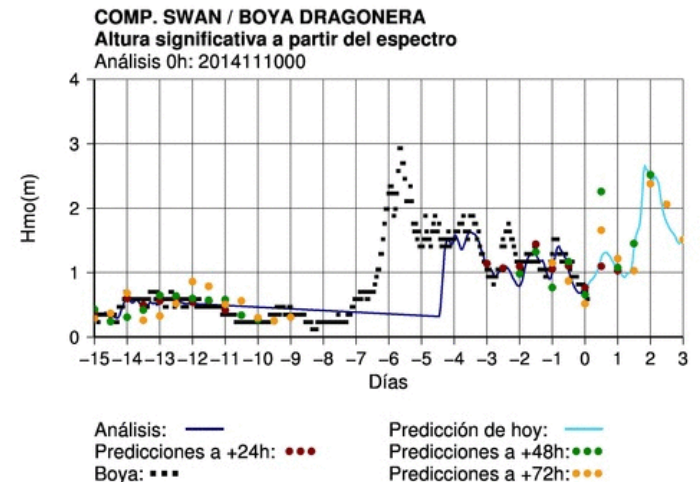
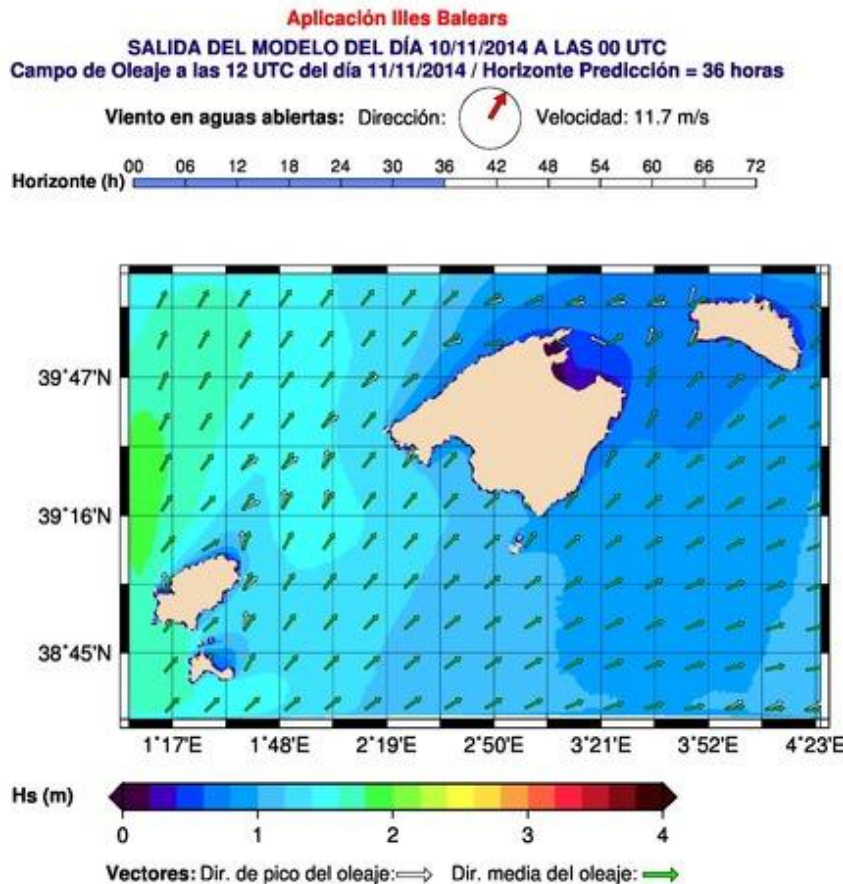
Predictability of ocean mesoscale and submesoscale processes ?

Water masses formation and spreading ?

Model interannual variability ?

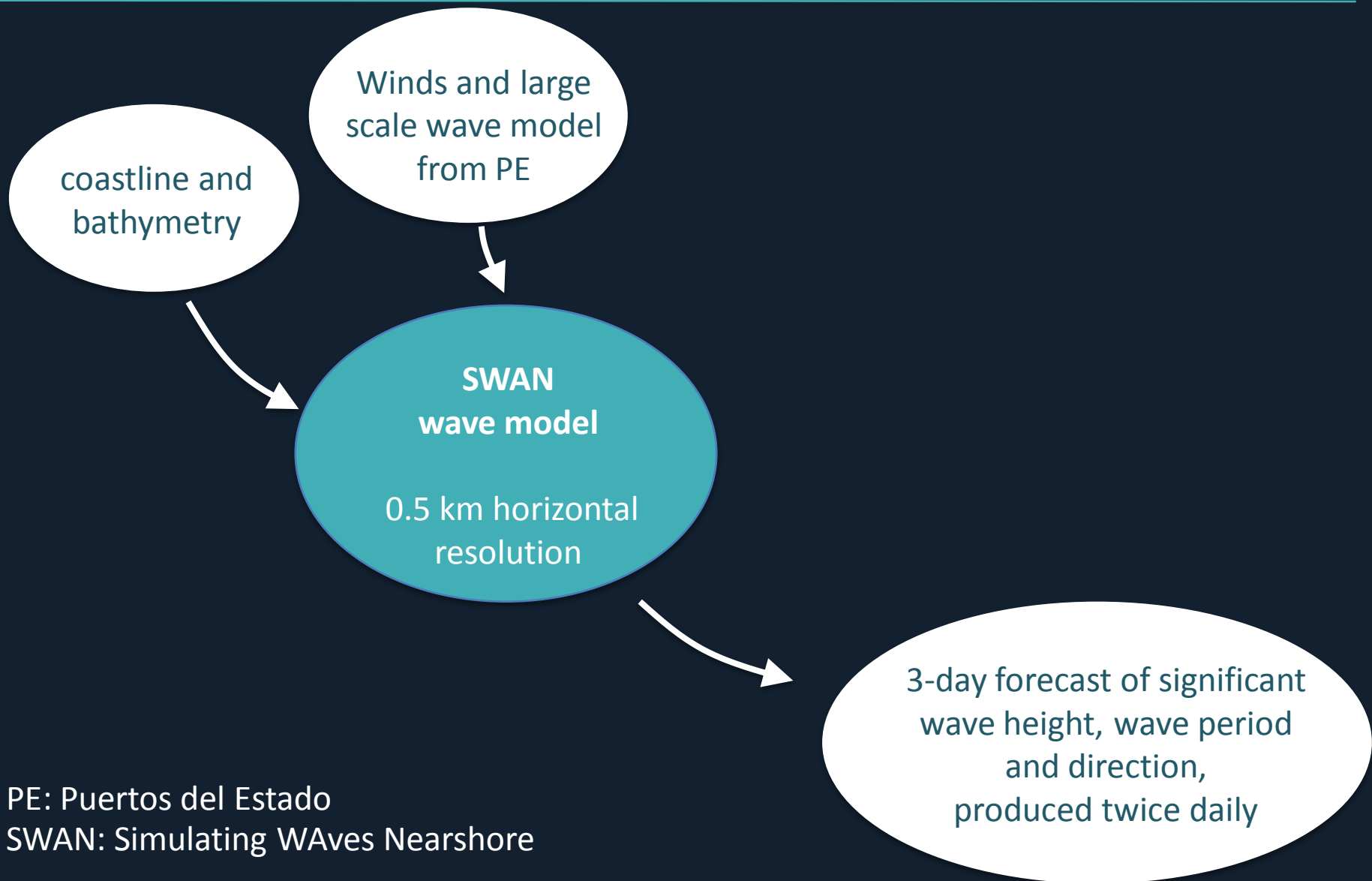
...

Local Wave Forecasting System at the Port Authorities (SAPO).
In collaboration with Puertos del Estado.



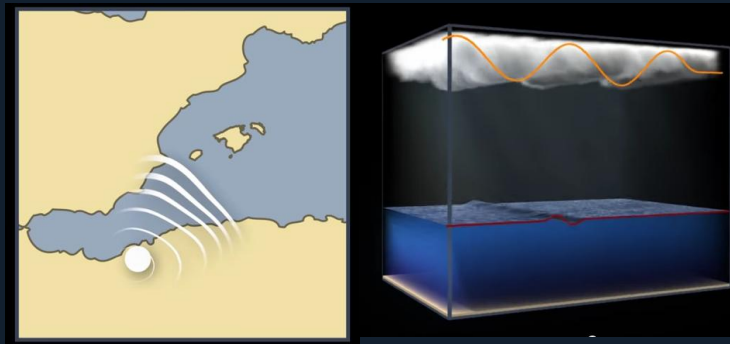
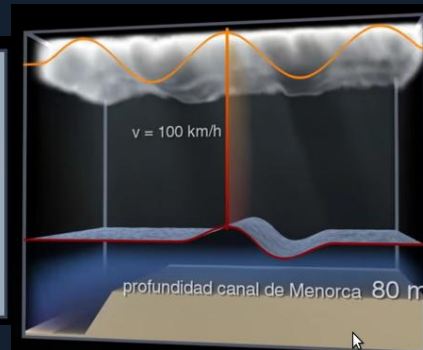
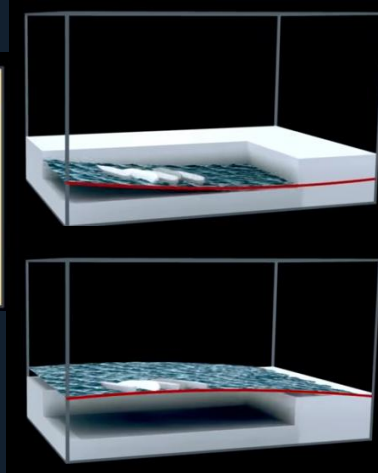
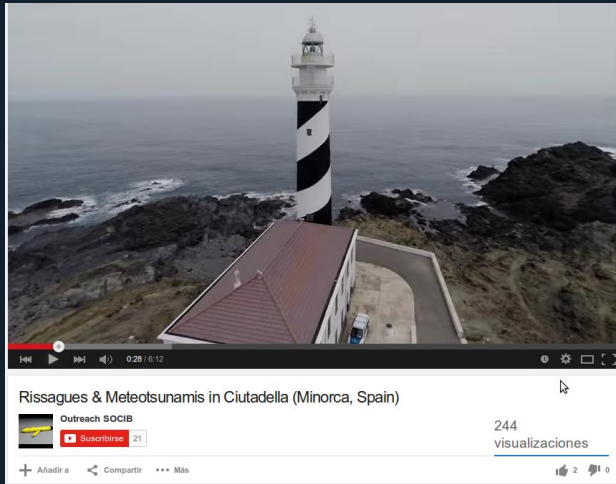
2

SAPO: Balearic Islands Operational Wave Model

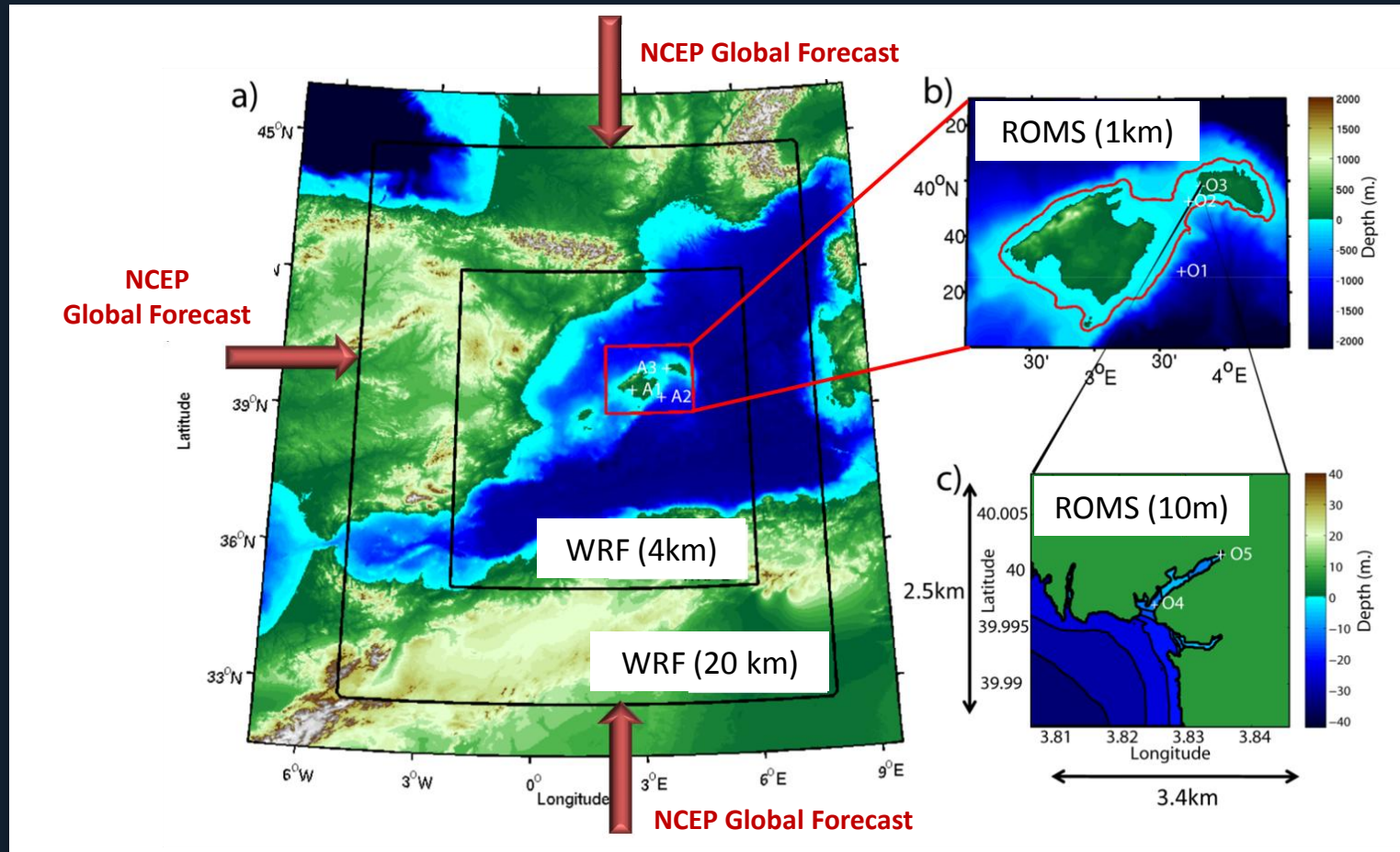


3 BRIFS: Balearic Rissaga Forecasting System

Rissaga: meteotsunami leading to dramatic sea level oscillations in Ciutadella harbour.



Coupled ocean-atmosphere prediction system



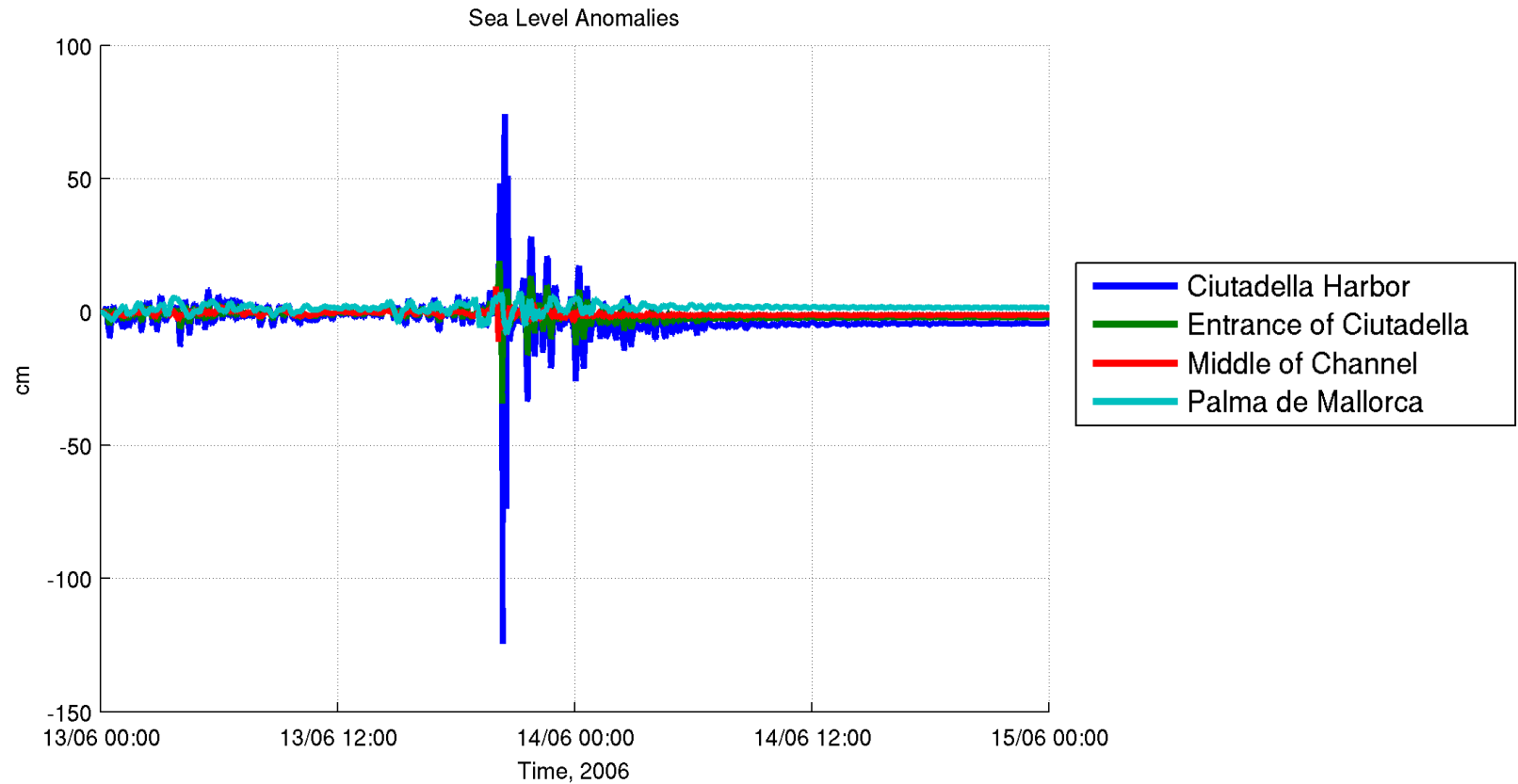
WRF: Weather Research and Forecasting Model

ROMS: Regional Ocean Modeling System

NCEP: National Centers for Environmental Prediction

3

BRIFS: Balearic Rissaga Forecasting System



1 BRIFS improvements: challenges and future work

- Robust model reformulation to allow for (i) full operationality, (ii) retrospective simulations and (iii) future improvements.
- Careful analysis of model predictions during past events to better evaluate the model capability to represent rissagues.

M&FF projects and collaborations



BlueFin tuna project



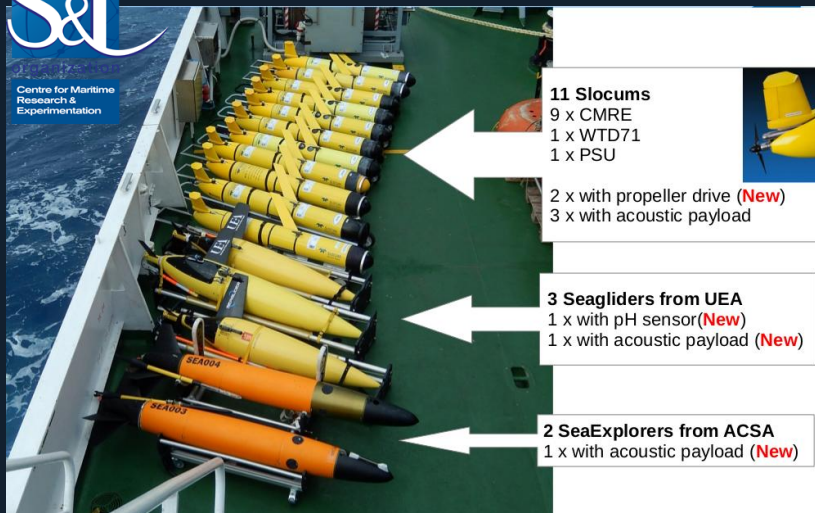
Jellyfish



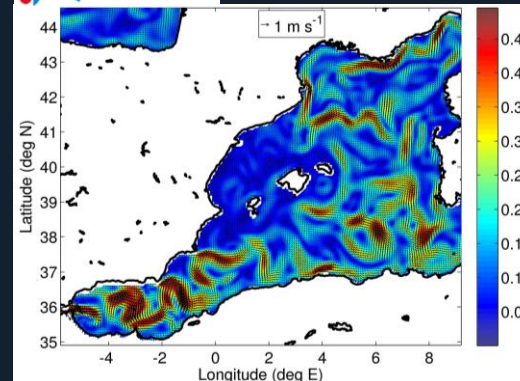
Turtles



REP14 – West Sardinia



MEDCLIC




MEDESS4MS



JERICO-NEXT



SUMMARY

- Both models and observations are essential to SOCIB ! 
 - M&FF activities strongly rely on Computing Facility, Data Center, ETD and Observing Facilities.
 - M&FF has a very active role to play in the interactions between facilities.
 - Limited personel for a wide range of activities...
- Incorporation of Romain Escudier 1st Feb 2015 (MEDCLIC project).

Gracias !